



# MOBILE TV/VIDEO GLASSES

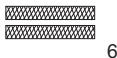
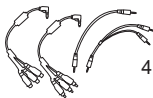
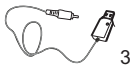
Important Product  
Information Guide

## **G**etting Started with Your iMovee Video Glasses/Mobile TV

Your iMovee Video Glasses/Mobile TV has been designed so that you can set it up quickly and start using it right away. Please read this section for instructions on getting started.

### **Your box should contain:**

1. Eyewear
2. Converter
3. USB Charging Cable
4. AV & RCA Cable
5. iPod Cable
6. Two Velcro Tapes
7. AC Adapter
8. User's Guide

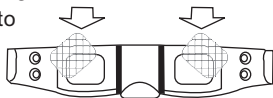


1

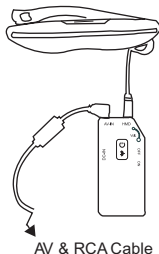
## How to use:

(Please refer to Appendix 2 for more details of places to connect).

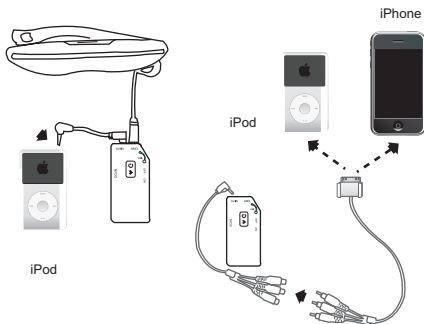
Remove the glass protection clear films before mounting the Eyewear to your head.



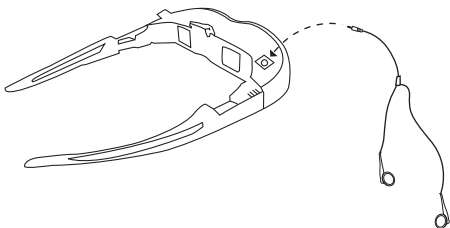
Connect Eyewear Cable and AV & RCA Cable to Converter.



AV & RCA Cable: these cables can be used respectively with different compatible devices on base of which kind of AV output plu is used in compatible devices.



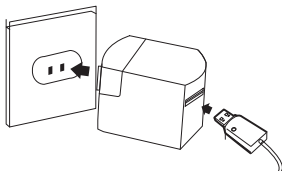
Select the iPod Cable to connect iPod or iPhone with Converter.



Connect earphone (only for model: iMovee AIBO).

3

Connect USB Charging Cable to a power source (PCs, laptops, etc.) with Converter, or use AC Adapter to charge . Charging time for Converter is about 3 hours.



or



Use supplied Velcro Tapes to secure the Eyewear Cable for more comfort and convenience.



# **G**etting to Know

## **Your iMovee Video Glasses/Mobile TV**

This chapter gives you some basic information you will need to know about your iMovee Video Glasses/Mobile TV and its important features.

### **Overview**

iMovee Video glasses/Mobile TV is an innovative electronic gadget which allows you to watch all your favorite movies/videos on the go which combines light-in-weight and highly portable compact design. However, please do not let its size fool you. It delivers high quality pixel perfect videos on an 80 inch virtual screen in VGA resolution. The viewing distance is 2.5 meters ahead of you with complete privacy.

### **iMovee Video Glasses/Mobile TV & iPod**

iMovee Video glasses makes a perfect partner viewing device with iPod Video. Our video glasses are compatible with all iPod video models. You can easily connect your iPod video to iMovee video glasses and enjoy your favorite videos on virtual big screen.

## **iMovee Video Glasses/Mobile TV & Prescription Glasses**

iMovee Video glasses/Mobile TV is designed in such a way that the user can use their personal prescription glasses along with the iMovee video glasses for personal viewing convenience.

### **Video and Audio all in One Design**

iMovee video glasses comes with an integrated noise reduction ear buds for outstanding audio quality along with crystal clear pixel perfect visual effect. Enjoy each moment of your favorite movies and videos with the real theater experience.

### **iMovee Video Glasses/Mobile TV: Your Private and Portable Theater**

iMovee Video Glasses/Mobile TV offers you complete privacy without interrupting others, you can take it and use it wherever you like.

### **iMovee Video Glasses/Mobile TV Power up**

iMovee Video Glasses/Mobile TV offers up to 8 viewing hours once it is fully charged. You can easily plug USB Charging Cable into your laptop or PC for immediate power supply, or use AC Adapter to charge .

## **iMovee Video glasses/Mobile**

### **TV & Video devices/Game consoles**

iMovee Video glasses is compatible with NTSC/PAL/SECAM video transmission. This means you can connect any video devices with video out function such as Archos, Microsoft Zune, Apple iPod, MP4 players, portable DVD players, Satellite receivers, Portable Multimedia Players, Video game consoles like PSP, PS2, PS3, Microsoft XBOX, Nintendo Wii etc. Connecting iMovee video glasses to a portable Digital Video Receiver makes it an ultimate Mobile TV, where you can enjoy your favorite TV shows wherever you are.

## **iMovee Video**

### **Glasses/Mobile TV & Mobile Phones**

iMovee Video glasses is usually compatible with any mobile phones with video out function. This includes Apple Iphone, Nokia N series such as N95, N73, N72, N70 etc and Samsung SGH-G608, SGH-P318+, SGH-D908i, SGH-u608 to name a few. iMovee devices are highly recommended for Mobile TV viewing by major Mobile TV service providers around the world. iMovee is just a Mobile TV viewing device the Mobile TV content has to be provided by a Mobile service provider in your region.

## **iMovee Video Glasses/Mobile TV Additional Accessories**

iMovee frequently releases new and additional accessories from time to time. So please be updated by our latest news and releases.

---

### **Care, Use and Safety Guidelines**

Your iMovee product complies with all CE, FCC, RoHS rules and Canadian Interface-Causing Equipment Regulations. Therefore, iMovee Theatre is also registered as having a suitable level of electromagnetic emission for home & office usage that can be used in all areas including residential areas.

# CE FCC RoHS

**For your safety and that of your equipment, please read carefully and follow the rules in this chapter for handling and caring for your iMovee. Please keep this User's Guide in a safe place for future reference.**

**This product should not be used by children under the age of seven. Because the children under the age of seven are still learning to focus and track with their eyes, as their vision is still immature.**

**The images iMovee Video Glasses/Mobile TV delivers are created by combining two disparate images being projected on two separated LCDs and these two images focus and overlap at 2.5 metres ahead of you. Therefore, it requires the following safety precautions:**

- To use iMovee Eyewear, you must keep your eyes focused on 2.5 metres ahead of you. Therefore, watching iMovee Video Glasses/Mobile TV for hours is not different from watching a TV set for an extended period of time.
- If you use the product with two screens apart or not in proper alignment, it may strain your eye muscles and cause rapid tiredness of the eyes.
- Using the product for an extended period of time without having breaks may cause eye fatigue, please take 5 minutes break every hour during the use of iMovee Video Glasses/Mobile TV.

- Depending on the content you watch, you may experience symptoms similar to those of motion sickness. We suggest that you consult a physician if you have any epileptic condition or if you experience any of the following symptoms while using this device: altered vision, muscle twitching, other involuntary movements, loss of awareness of your surroundings, mental confusion, and convulsions.

**Please also read carefully and follow the safety instructions as stated below to keep yourself and others safe:**

- Check the voltage of your power supply (100-240V) and make sure the iMovee Video Glasses /Mobile TV and its accessories can be used under the voltage.
- Do not bend, step on any power cords or cables, as damaged power cords or cables may cause fire.
- You must not place anything over the power cords or cables.
- When the device is not in use for an extended period of time, remove the battery part, turn off the whole power source and unplug from the electrical socket.

- Cut the power off immediately if you hear any peculiar noises or suspect an unusual smell.
- Do not drop or apply strong impact to the product, and do not place it in areas of excessive temperature or under direct sunlight.
- You must not attempt to disassemble or modify the product. In order to do so, you should go to an authorized service provider.
- If one of the following situations should arise, the equipment should be checked by an authorized service provider.
  - The power cord or plug is damaged.
  - Any type of liquid has penetrated into the equipment.
  - The equipment does not work normally, or you fail to get it to work according to this User's Guide.
  - The equipment has been dropped or severely damaged.
  - The equipment has obvious signs of breakage.
- The Converter contains an internal Lithium Battery-powered circuit. There is a risk of explosion, if the battery is incorrectly replaced or handled. Do not attempt to recharge, disassemble, immerse in water or dispose of it in fire.

- There would be a danger of explosion if the battery were incorrectly replaced. Dispose of used batteries according to the manufacture's guidelines.
- The Converter also contains a Li-ion battery pack. There is a risk of fire and chemical burn if the battery pack is handled improperly. Do not disassemble, crush, puncture, dispose of it in water or fire. You must not expose it to a temperature higher than 60°C.
- Do not use this product near any safety hazards, such like stairs, balconies, or other things that can be tripped over, run into , knocked down or fallen over. This product should only be used while you are seated and never while using sharp or potentially dangerous objects, operating any form of mechanical device, or performing any act that normally requires you to see what you are doing.
- Do not use this product near water ( for instance, a shower, tap, sink or swimming pool).
- Do not place the product in a place of high humidity or near sources of dust, smoke or steam.
- In order to avoid hearing damages, please set

the volume to a safe level. If you experience ringing in your ears, reduce or pause to use your iMovee Video glasses/Mobile TV.

- Permanent hearing loss may occur if earphones are used at extremely high volume, in order to protect your hearing:
  - Keep volume at an appropriate, comfortable level.
  - Avoid turning up volume to block out possible noisy surroundings.
  - Turn the volume down if you can not hear people speaking near you.
- Do not use the product for an extended period of time without a break. Stop using the product immediately if you feel fatigued or nauseous.
- When you watch dynamic content with a great deal of action involved, such as video games, taking more frequent breaks will help to relax your eyes in order to avoid any discomfort.
- Wearing glasses improperly may cause damage to your eyesight. Please ensure you wear properly and comfortably, and take 5 minutes break every hour during the use of the Eyewear.
- Please disconnect the equipment from AC outlet before cleaning. You must not use any liquid or spray detergent for cleaning. You should use a

moistened soft cloth to clean the surface of the product.

- z Do not use the Eyewear while you are walking, riding or driving.

## Troubleshooting

Occasionally you might have problems while viewing with your iMovee Video glasses/Mobile TV. This chapter gives you some easy solutions to try when you have a problem.

### Scenario 1: No video motions, images

Check List	Easy Solutions
<ul style="list-style-type: none"> <li>- Is the Power Cable plugged safely and securely?</li> <li>- Is the battery used up and connected properly?</li> <li>- Is the battery switched on?</li> <li>- Is the A/V Cable connected properly?</li> <li>- Is the A/V out function of the player open?</li> </ul>	<ul style="list-style-type: none"> <li>- Plug into the power source safely and securely.</li> <li>- Re-charge the battery.</li> <li>- Turn on battery's power switch.</li> <li>- Plug the A/V terminal properly.</li> <li>- Set the A/V out function of the player open.</li> </ul>

## Scenario 2: Screen suddenly turns off or flickers

Check List	Easy Solutions
<ul style="list-style-type: none"> <li>. Is the battery used up?</li> </ul>	<ul style="list-style-type: none"> <li>. Re-charge the battery.</li> </ul>

## Scenario 3: Darkened and fuzzy pictures

Check List	Easy Solutions
<ul style="list-style-type: none"> <li>. Have you taken off the protection clear films of the display glasses?</li> <li>. Is the display setting of external device proper?</li> <li>. Do the display glasses need cleaning?</li> </ul>	<ul style="list-style-type: none"> <li>. Please take off the protection clear films before using iMovee Theatre Eyewear.</li> <li>. Set the display of external device properly.</li> <li>. Clean with a soft cloth.</li> </ul>

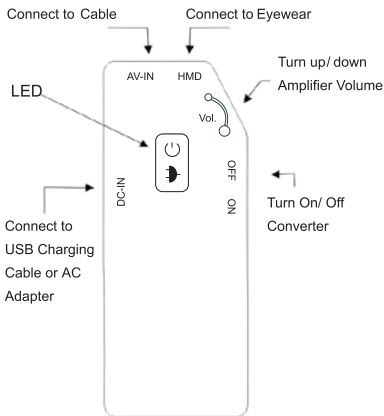
## Scenario 4: No sound

Check List	Easy Solutions
<ul style="list-style-type: none"> <li>. Is the volume set at zero?</li> <li>. Is the programme you are watching mute?</li> <li>. Is the AV Cable connected properly?</li> </ul>	<ul style="list-style-type: none"> <li>. Turn up the volume.</li> <li>. Cancel the mute option on your player.</li> <li>. Plug the AV Cable terminal properly.</li> </ul>

# A ppendix 1: iMovee Theatre Specifications

Display	Two TFT LCD display chips
Image Size	80" virtual screen at 2.5m
Resolution	640X480 (VGA)
Color Depth	24-bit input
Viewing Angle	32° diagonal
Image Input	Composite AV
Video Signal	NTSC/PAL/SECAM
Audio	Double-channel stereo
Power Supply	Built-in rechargeable Lithium-ion battery
Battery Duration	about 8 hours
AC Adapter	Input: AC 100-240(V), 50/60(Hz) Output: DC 5V, 500mA
Power Consumption	< 450mWa
Net Weight	70g (without cables)

# A ppendix 2: Converter



## LED indication lights



### Blue colour LED:

ON: Converter power on  
OFF: Converter power off



### Yellow colour LED:

ON: USB Charging Cable or AC Adapter in  
OFF: USB Charging Cable or AC Adapter out, or battery is full.

## Charge the Converter

Turn on your PC or laptop and connect the USB Charging Cable to the USB port. The battery can get power from the computer directly, or use AC Adapter to charge .

---

## **A**ppendix 3: Compatible Devices

- Watch movies with iPod, iPhone, MP4, MP5, PMP, DVD & Car DVD Player, Mobile Phone with AV out.
- Play games with PS2, PS3, XBOX, Wii, Game Console, Handhold Game.
- Watch video with TV, Portable TV Tuner,
- Any other devices with video out.